

## AGENDA

### FIFTEENTH MEETING OF THE SOUTHEASTERN WISCONSIN REGIONAL TRANSIT AUTHORITY

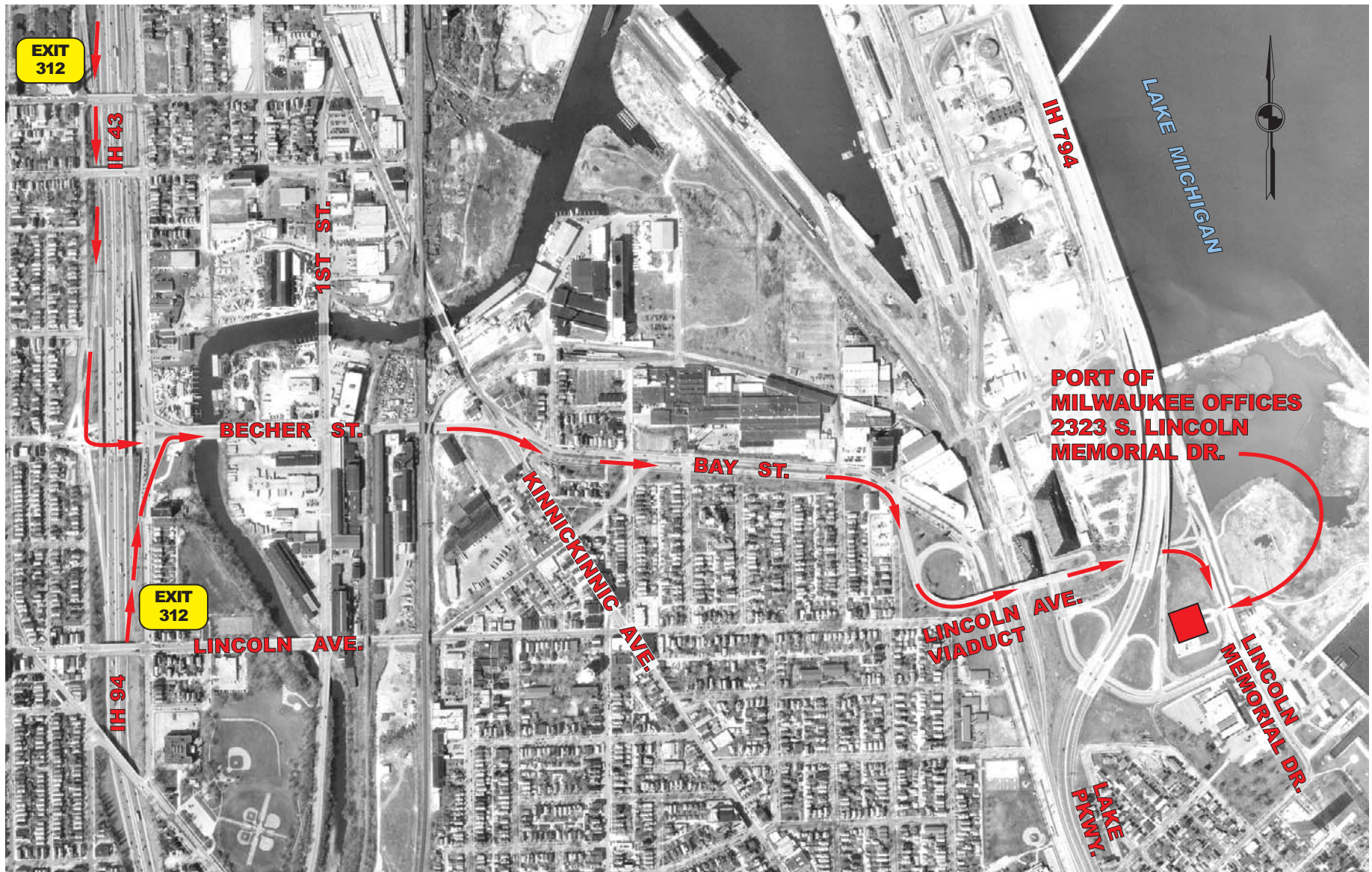
**DATE:** November 19, 2007  
**TIME:** 8:00 a.m.  
**PLACE:** Port of Milwaukee Offices  
2323 South Lincoln Memorial Drive  
Milwaukee, Wisconsin  
(Map with directions attached)

1. Welcome and roll call
2. Approval of Agenda
3. Review and approval of minutes of June 25, 2007, meeting (copy enclosed)
4. Correspondence (copies enclosed)
5. Review and discussion of written comments received on website since last meeting (none)
6. Report on 2007-2009 State Budget Bill results -- RTA communications consultant team
7. Update on KRM Request to Enter Preliminary Engineering and Draft Environmental Impact Statement -- SEWRPC staff
8. Report on transit discussions with county executives and mayors -- Chair Ostby
9. Discussion on next steps to be taken to complete charge set forth in the RTA enabling legislation
10. Consideration of next meeting date
11. Adjournment

Karl Ostby  
Chair

\* \* \*

# LOCATION MAP



## DIRECTIONS TO THE PORT OF MILWAUKEE OFFICES USING IH-94 / IH-43

1. Take IH-94 / IH-43 to Exit 312 and exit at Becher Street.
2. Turn east onto Becher Street. If exiting from IH-94/IH-43 northbound, veer to your right onto Becher Street. If exiting from IH-94/IH-43 southbound, turn left onto Becher Street.
3. Continue east on Becher Street. You will pass two stop-and-go lights which are 1st Street and Kinnickinnic Avenue. Becher then becomes Bay Street. Continue on Bay Street for about one-half mile. The Lincoln Avenue viaduct veers to the right immediately before the first stop light by Wrought Washer.
4. Veer right onto the Lincoln Avenue viaduct.
5. After you cross over the viaduct, turn right (south) onto S. Lincoln Memorial Drive. The Port of Milwaukee Administration Building is immediately on your right hand side at 2323 S. Lincoln Memorial Drive Milwaukee, WI 53207. The phone number is (414) 286-3511.