

TENTATIVE AGENDA

FIRST MEETING OF THE REGIONAL TRANSIT AUTHORITY OF KENOSHA, MILWAUKEE, AND RACINE COUNTIES

DATE: February 20, 2006

TIME: 3:00 P.M.

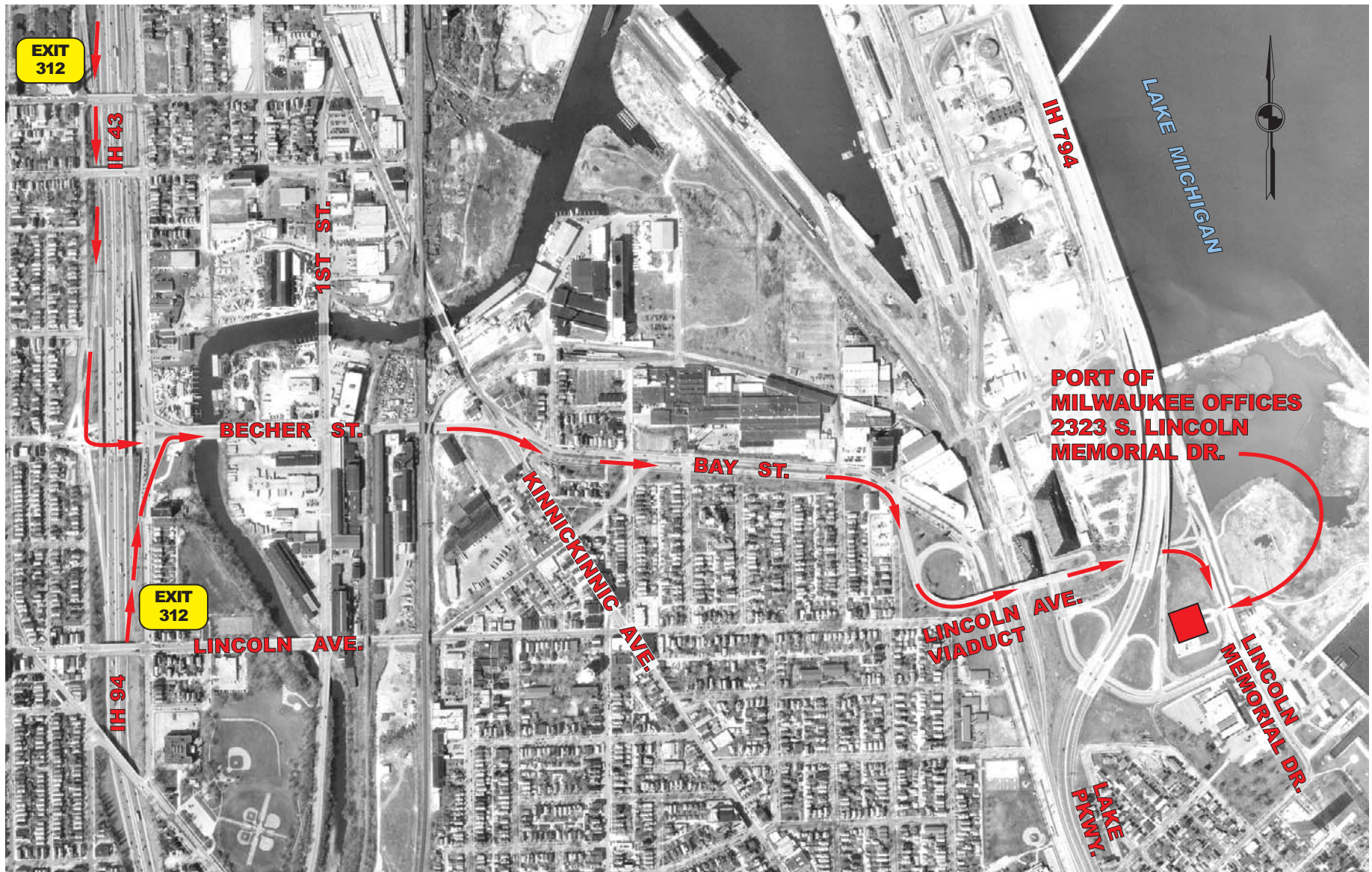
PLACE: Port of Milwaukee Offices
2323 South Lincoln Memorial Drive
Milwaukee, Wisconsin
(Map with directions attached)

1. Welcome and Introductions
2. Approval of Agenda
3. Consideration/possible actions relative to the following items concerning the organization and operation of the Regional Transit Authority
 - a. Review of statutory make-up and responsibilities (see Exhibits A and B enclosed)
 - b. Requirements of Wisconsin open meetings and open records laws
 - c. Budget and fiscal considerations, including fiscal agent
 - d. Website establishment
 - e. Future meeting schedule, including preferred dates, times, and locations
 - f. Approach to public comments at meetings
 - g. Staffing arrangements
 - h. Election of officers
4. Discussion/possible action on approach to addressing statutory responsibilities (see Exhibit C enclosed)
5. Adjournment

Philip C. Evenson
SEWRPC Executive Director
Temporary Meeting Chair

* * *

LOCATION MAP



DIRECTIONS TO THE PORT OF MILWAUKEE OFFICES USING IH-94 / IH-43

1. Take IH-94 / IH-43 to Exit 312 and exit at Becher Street.
2. Turn east onto Becher Street. If exiting from IH-94/IH-43 northbound, veer to your right onto Becher Street. If exiting from IH-94/IH-43 southbound, turn left onto Becher Street.
3. Continue east on Becher Street. You will pass two stop-and-go lights which are 1st Street and Kinnickinnic Avenue. Becher then becomes Bay Street. Continue on Bay Street for about one-half mile. The Lincoln Avenue viaduct veers to the right immediately before the first stop light by Wrought Washer.
4. Veer right onto the Lincoln Avenue viaduct.
5. After you cross over the viaduct, turn right (south) onto S. Lincoln Memorial Drive. The Port of Milwaukee Administration Building is immediately on your right hand side at 2323 S. Lincoln Memorial Drive Milwaukee, WI 53207. The phone number is (414) 286-3511.